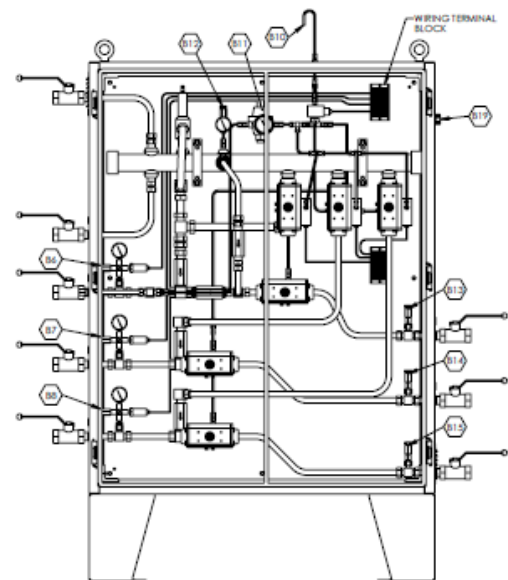


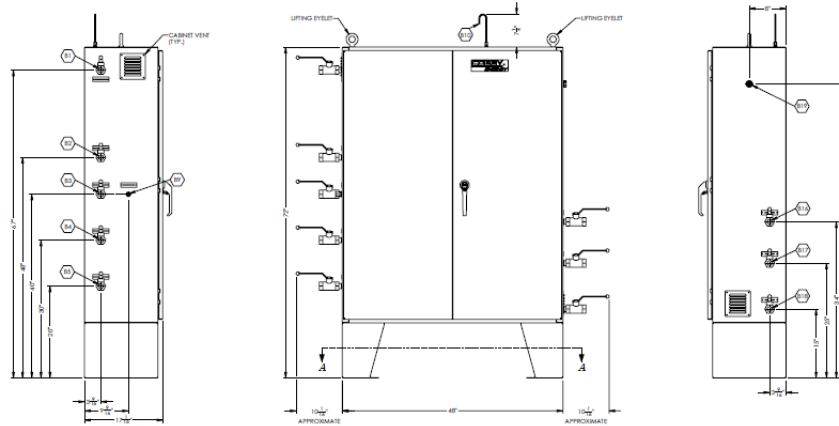
Cobey Energy, located in Buffalo, NY is a premier equipment packager specializing in gas compression. Every unit is designed with maintainability and reliability at the forefront. Simplicity of operation is paramount and considered in every design. Custom engineered designs are available to meet your unique site requirements.

Cobey Energy CNG Priority Fill Panel standard offerings include:

- ❖ Used for Fast Fill fueling operations
- ❖ Provided in a NEMA 3R cabinet with vents and locking handles.
- ❖ Cabinet painted bright white
- ❖ Connections:
 - (2) Compressor inlets
 - (3) Storage bank outlets (high, mid, low)
 - (3) Dispenser outlets(high, mid, low)
 - (1) High pressure pilot gas supply to compressor(s)
- ❖ Isolation ball valves at each connection
- ❖ Direct fill line from compressors to dispensers
- ❖ Bleed valves allow for safe system depressurization
- ❖ System Control
 - Integrates directly to compressor control panels for logic, operation and operating parameter set points.
 - Remote monitoring and operation standard feature when integrated to Cobey Energy compressor packages.
- ❖ Instrumentation Included:
 - (3) Pressure transducers
 - (4) Pressure gauges
- ❖ 1-1/4" electrical conduit bulk head fitting for site wiring
- ❖ Lifting eyes for ease of installation
- ❖ Locking exterior handle
- ❖ All electrical components designed for Class 1, Div 2, Grp. D service
- ❖ Available Options:
 - Pre-dispenser coalescing filters
 - Time fill discharge line
 - Time fill panels
 - Buffer fill panels



CE-PFP with doors removed for clarity,
layout typical of all sizes



	CE-PFP.50	CE-PFP.75	CE-PFP1.0
Tube Dia.	½"	¾"	1"
Design Pressure (psig)	4,500	4,500	4,500
Cabinet Dimensions (in.)	48" x 72" x 16"		



Cobey Energy supplies and manufactures a full complement of CNG filling station components, including:

- ❖ Natural Gas desiccant dryers
 - Non-regenerative single vessel
 - Manual regenerative, single & dual vessel
 - Auto regenerative, single & dual vessel
- ❖ ASME Section VIII, Div 2 storage spheres
 - 48" ID – 11,993 scf capacity ea.
- ❖ ASME storage tubes
 - 23' lg. – 12,207 scf capacity ea.
 - 11.5' lg. – 5,711 scf capacity ea.
- ❖ CNG fuel dispensers
 - Fast fill
 - Time fill posts

Cobey Energy is an Authorized Packager of:

